

XL-VIBRO-IMPACT® DRUCKLUFTHAMMER **HEAVY DUTY VIBRO-IMPACT® AIR HAMMER**



Der punktgenaue Schlag des extrem kräftigen Pressluft-Hammers hilft bei der Demontage von z. B. Kegelsitzverbindungen, Radlagern, Buchsen, festgerosteten Schraubverbindungen und wirkt unterstützend z. B. von Abzieh- und Silentwerkzeugen.

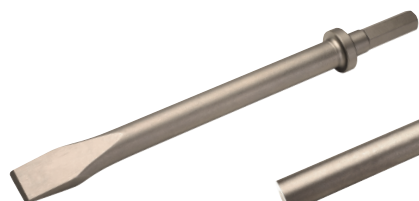
Nr. 290 300 XL-VIBRO-IMPACT® Drucklufthammer



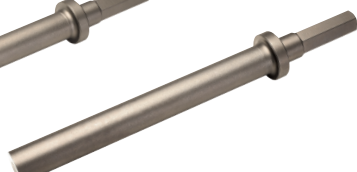
Heavy duty VIBRO-IMPACT® air hammer to loose tight connections at trucks, agricultural, construction etc. The high performance air hammer helps to disassemble e. g. conical seat connection, wheel bearing, bushes, rusted screw connections. Can support as well pullers.

Nr. 290 300 Heavy Duty VIBRO-IMPACT® Air Hammer

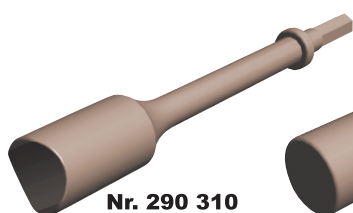
MÜLLER-WERKZEUG Technische Daten / technical information		
Antrieb / drive	mm	15mm 6-Kant / HEX
Gewicht / weight	Kg	5,40
Länge / length	mm	380
Anschlussgewinde / air nipple	Zoll	3/8"
Schlauchanschluss / air hose		13 mm / 1/2"
Luftverbrauch / air consumption	l/min	210
Schläge/min / impacts/min	BPM	2.500
Arbeitsdruck / air pressure	bar	6,2



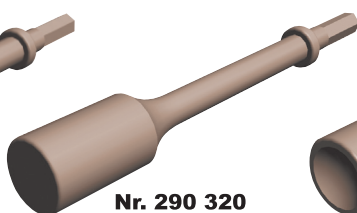
Nr. 290 318



Nr. 290 338



Nr. 290 310



Nr. 290 320



Nr. 290 331

- Nr. 290 318 XL-VIBRO-IMPACT® Flachmeißel, 6-kant Schaft
Heavy Duty VIBRO-IMPACT® flat chisel
- Nr. 290 338 XL-VIBRO-IMPACT® Austreiber 20mm, 6-kant Schaft
Heavy Duty VIBRO-IMPACT® pin driver 20mm
- Nr. 290 310 XL-VIBRO-IMPACT® Spurstangen, 6-kant Schaft
Heavy Duty VIBRO-IMPACT® tie rod
- Nr. 290 320 XL-VIBRO-IMPACT® Hammer 6-kant Schaft
Heavy Duty VIBRO-IMPACT® hammer
- Nr. 290 331 XL-VIBRO-IMPACT® Konkav 6-kant Schaft
Heavy Duty VIBRO-IMPACT® concave

